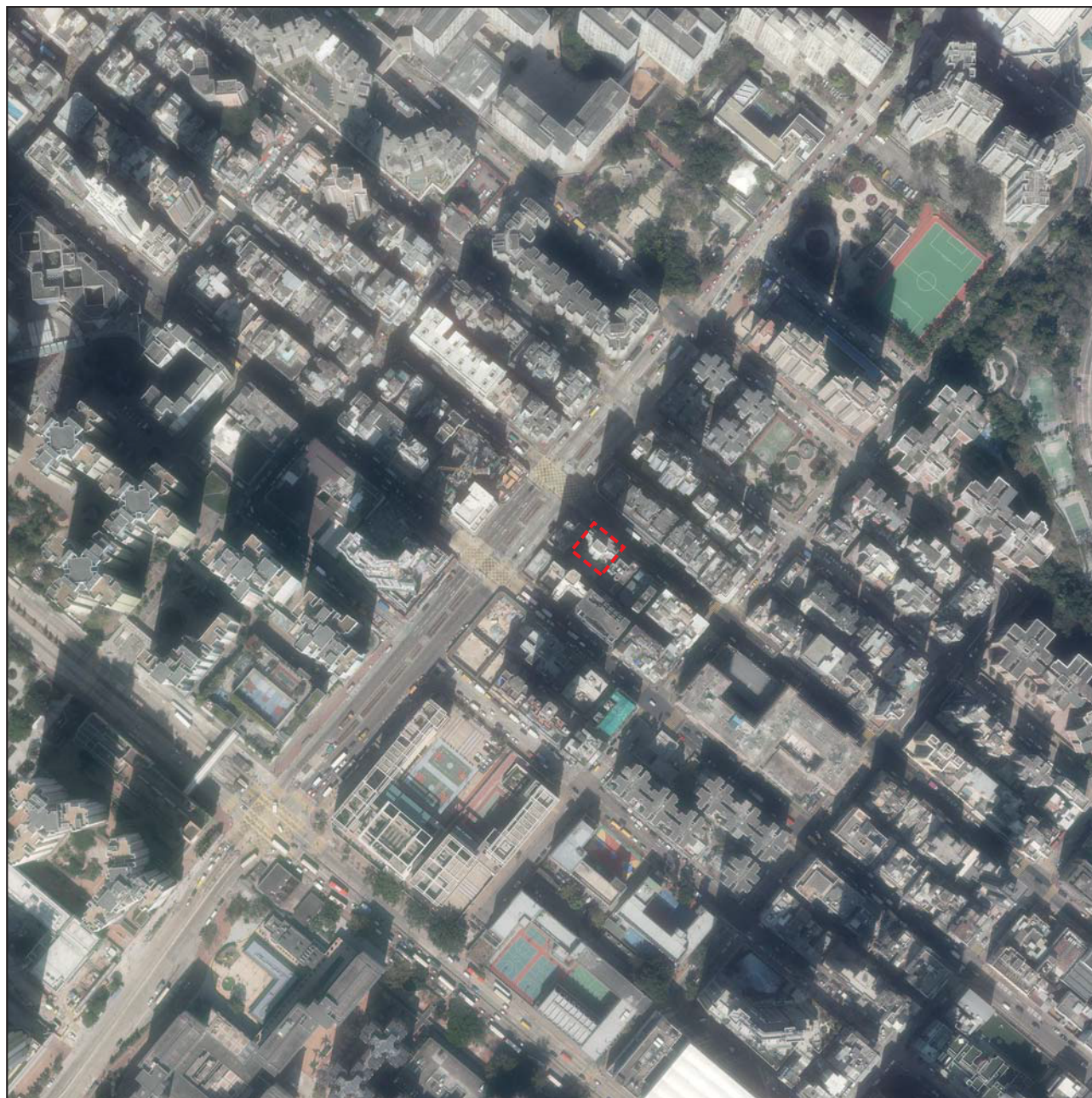



AERIAL PHOTOGRAPH OF THE DEVELOPMENT

發展項目的鳥瞰照片



 Boundary Line of the Development
發展項目的邊界

Adopted from part of the aerial photograph taken by the Survey and Mapping Office of Lands Department at a flying height of 6,900 feet, Photo No. E139796C, dated 5 February 2021.

摘錄自地政總署測繪處於2021年2月5日在6,900呎飛行高度拍攝之鳥瞰照片之部份，編號為E139796C。

Survey and Mapping Office, Lands Department, The Government of HKSAR © Copyright reserved –reproduction by permission only.

香港特別行政區政府地政總署測繪處©版權所有，未經許可，不得複製。

Remark:

This Aerial Photograph has shown the area more than that required under the Residential Properties (First-hand Sales) Ordinance due to technical reasons (such as the shape of the Development).

備註：

由於技術原因 (例如發展項目之形狀)，此鳥瞰照片所顯示的範圍多於《一手住宅物業銷售條例》要求顯示的範圍。