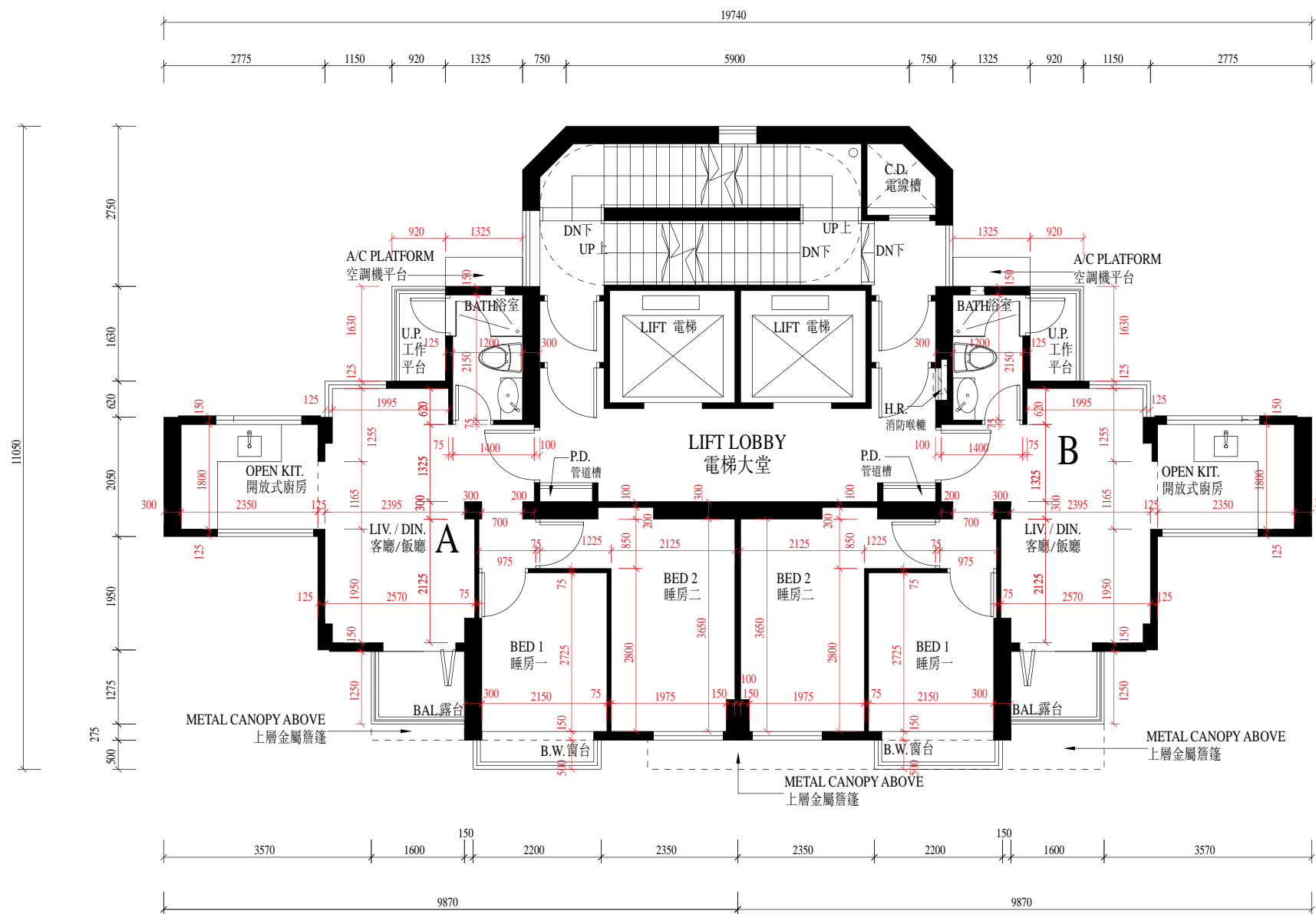


FLOOR PLANS OF RESIDENTIAL PROPERTIES IN THE DEVELOPMENT

發展項目的住宅物業的樓面平面圖

30/F FLOOR PLAN
三十樓樓面平面圖



Remarks:

1. The floor-to-floor height of each flat of the Development is 3.15m.
2. The thickness of the floor slabs (excluding plaster) of each residential property is 150mm.
3. The internal area of the residential properties on the upper floors will generally be slightly larger than those on the lower floors because of the reducing thickness of the structural walls on the upper floors.

備註:

1. 每一單位的樓面至樓面高度為3.15米。
2. 每個住宅單位的樓板(不包括灰泥)的厚度為150毫米。
3. 因住宅物業的較高樓層的結構牆的厚度遞減，較高樓層的內部面積，一般比較低樓層的內部面積稍大。

NOTATION 圖例

- A/C PLATFORM = Air-conditioning Platform 空調機平台
 BAL. = Balcony 露台
 BATH = Bathroom 浴室
 BED 1 = Bedroom 1 睡房一
 BED 2 = Bedroom 2 睡房二
 B.W. = Bay Window 窗台
 DIN. = Dining Room 飯廳
 C.D. = Cable Duct 電線槽
 H.R. = Hose Reel 消防喉轆
 LIV. = Living Room 客廳
 OPEN KIT. = Open Kitchen 開放式廚房
 P.D. = Pipe Duct 管道槽
 U.P. = Utility Platform 工作平台



SCALE 比例尺 0 1 2 3 4 5m/米