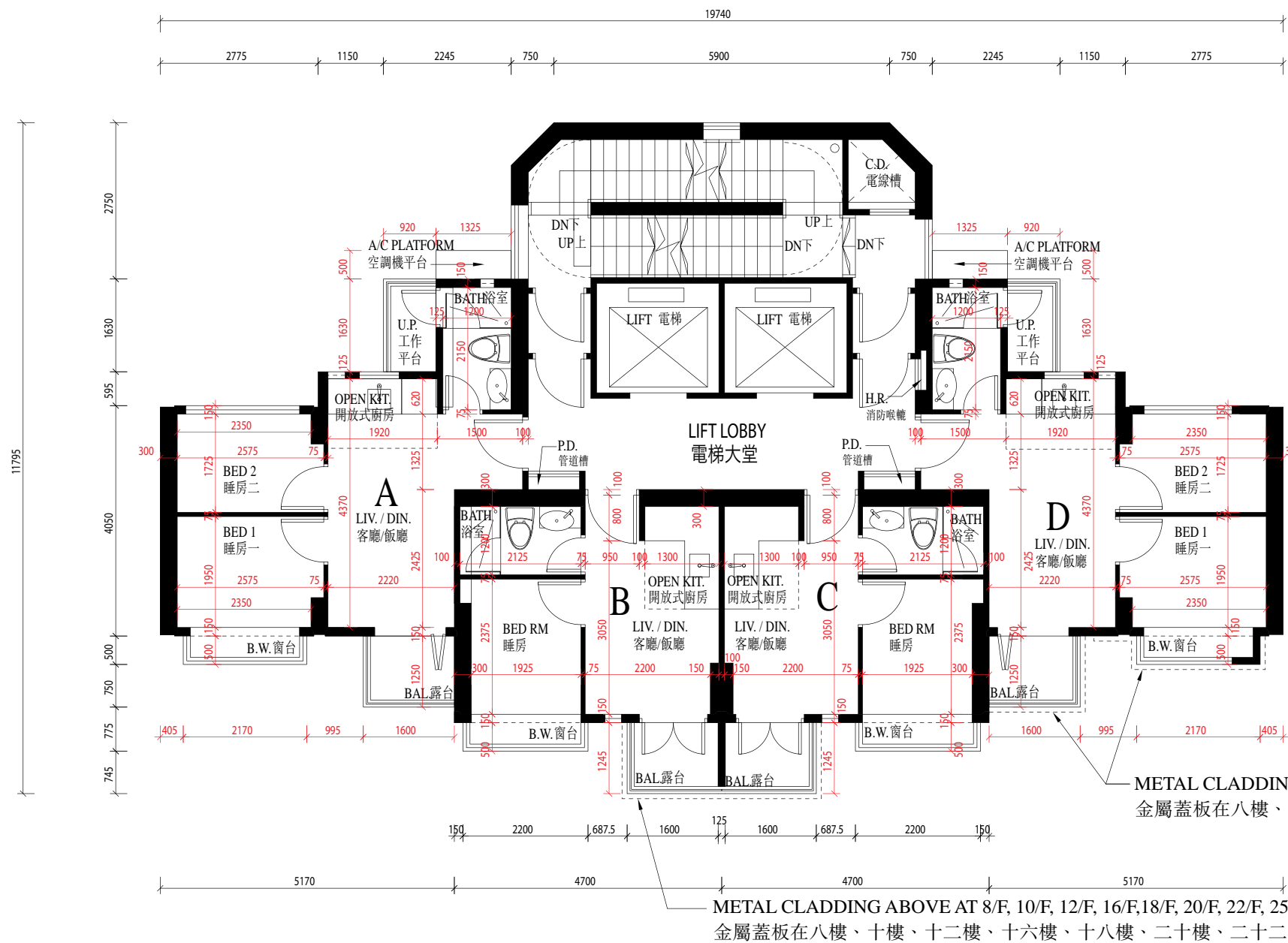


FLOOR PLANS OF RESIDENTIAL PROPERTIES IN THE DEVELOPMENT

發展項目的住宅物業的樓面平面圖

7/F-12/F, 15/F-23/F and 25/F-28/F FLOOR PLAN
七樓至十二樓、十五樓至二十三樓及二十五樓至二十八樓樓面平面圖



Remarks:

1. The floor-to-floor height of each flat of the Development is 3.15m.
2. The thickness of the floor slabs (excluding plaster) of each residential property is 150mm.
3. The internal area of the residential properties on the upper floors will generally be slightly larger than those on the lower floors because of the reducing thickness of the structural walls on the upper floors.
4. There is no cover for balconies of Flat B and Flat C on 28/F of the Development.

備註:

1. 每一單位的樓面至樓面高度為3.15米。
2. 每個住宅單位的樓板(不包括灰泥)的厚度為150毫米。
3. 因住宅物業的較高樓層的結構牆的厚度遞減，較高樓層的內部面積，一般比較低樓層的內部面積稍大。
4. 發展項目28樓B單位及C單位之露台不設上蓋。

NOTATION 圖例

- A/C PLATFORM = Air-conditioning Platform 空調機平台
- BAL. = Balcony 露台
- BATH = Bathroom 浴室
- BED 1 = Bedroom 1 睡房一
- BED 2 = Bedroom 2 睡房二
- BED RM. = Bedroom 睡房
- B.W. = Bay Window 窗台
- DIN. = Dining Room 飯廳
- C.D. = Cable Duct 電線槽
- H.R. = Hose Reel 消防喉轆
- LIV. = Living Room 客廳
- OPEN KIT. = Open Kitchen 開放式廚房
- P.D. = Pipe Duct 管道槽
- U.P. = Utility Platform 工作平台

